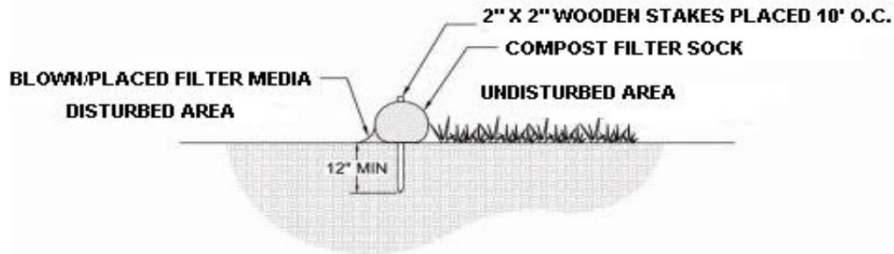


**STANDARD E&S WORKSHEET #1
COMPOST FILTER SOCKS**

PROJECT NAME: AMBLER BOILER HOUSE MINOR MODIFICATION
 LOCATION: AMBLER BOROUGH, MONTGOMERY COUNTY, PA
 PREPARED BY: JM DATE: 4/17/2015
 CHECKED BY: KO DATE: 4/17/2015



SOCK (NO)	DIA (IN.)	LOCATION	SLOPE (%)	SLOPE LENGTH ABOVE BARRIER (FT)
1	12	SW OF PARKING AREA	3	165
2	12	SW OF PARKING AREA	7	53
3	12	SW OF PARKING AREA	9	23
4	12	NE OF PARKING AREA	2	126
5	12	NE OF PARKING AREA	3	94
6	12	NE OF PARKING AREA	17	17